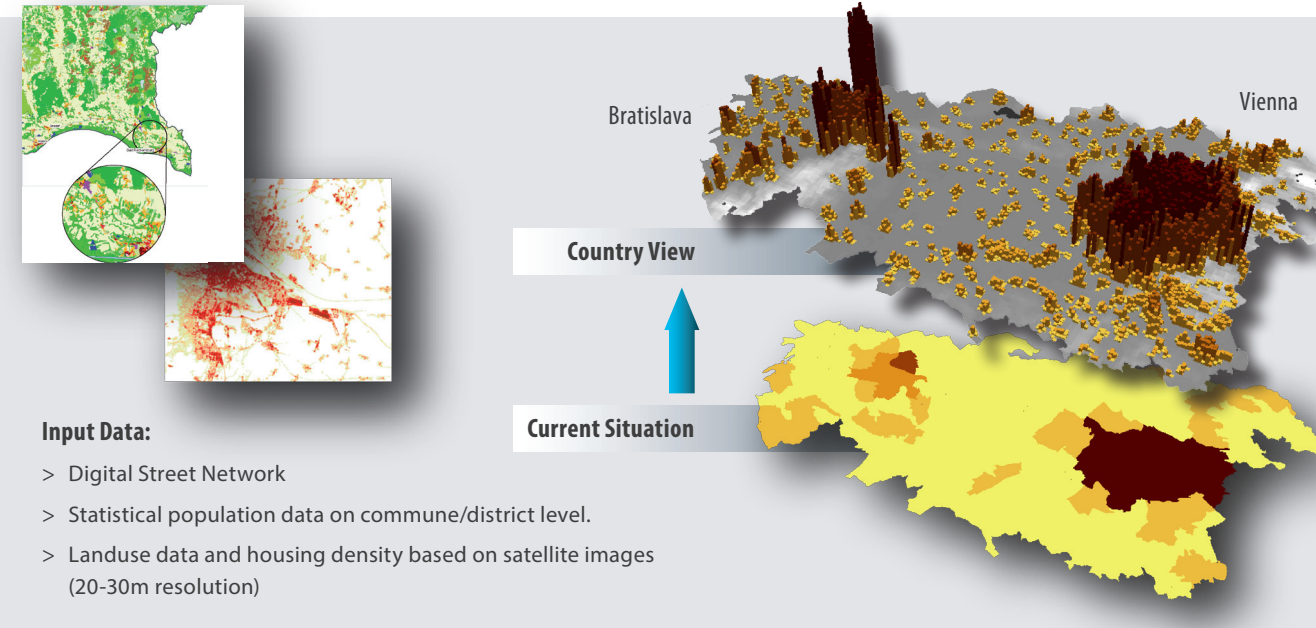


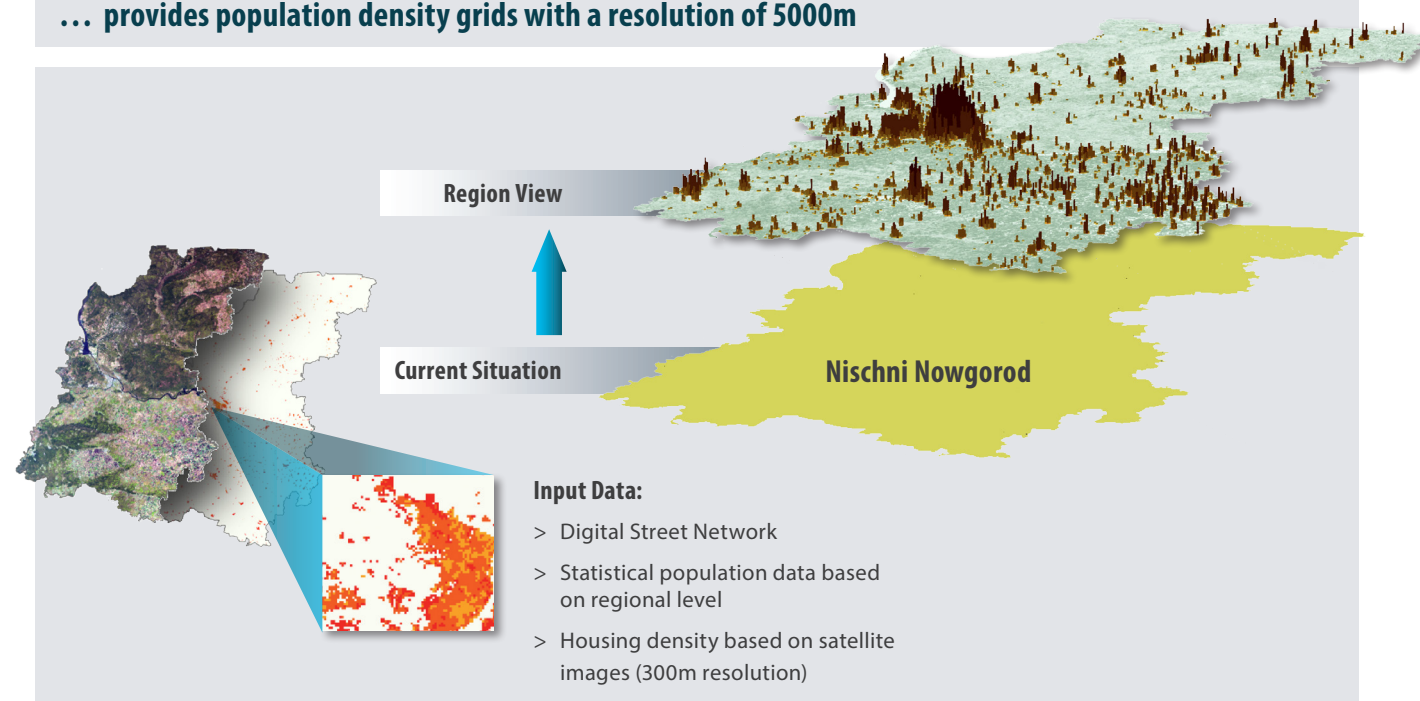
PopSpot COUNTRY VIEW

- ... provides detailed population density maps for areas where statistical information on census is only available on commune or district level
- ... provides population density grids with a resolution of 250m



PopSpot REGION VIEW

- ... provides detailed population density maps in areas where only coarse statistical and land use information is available
- ... provides population density grids with a resolution of 5000m



PopSpot SERVICE SPECIFICATION

Service	Resolution	Format
CityView night	50 to 100m raster cells	Raster
CityView day	50 to 100m raster cells	Raster
CityView 3D	50 to 100m raster cells	Raster
Street View	Same as Tele Atlas MultiNet®	Vector (Line)
CountryView	250m raster cells	Raster
RegionView	5000m raster cells	Raster

PopSpot CONTACT



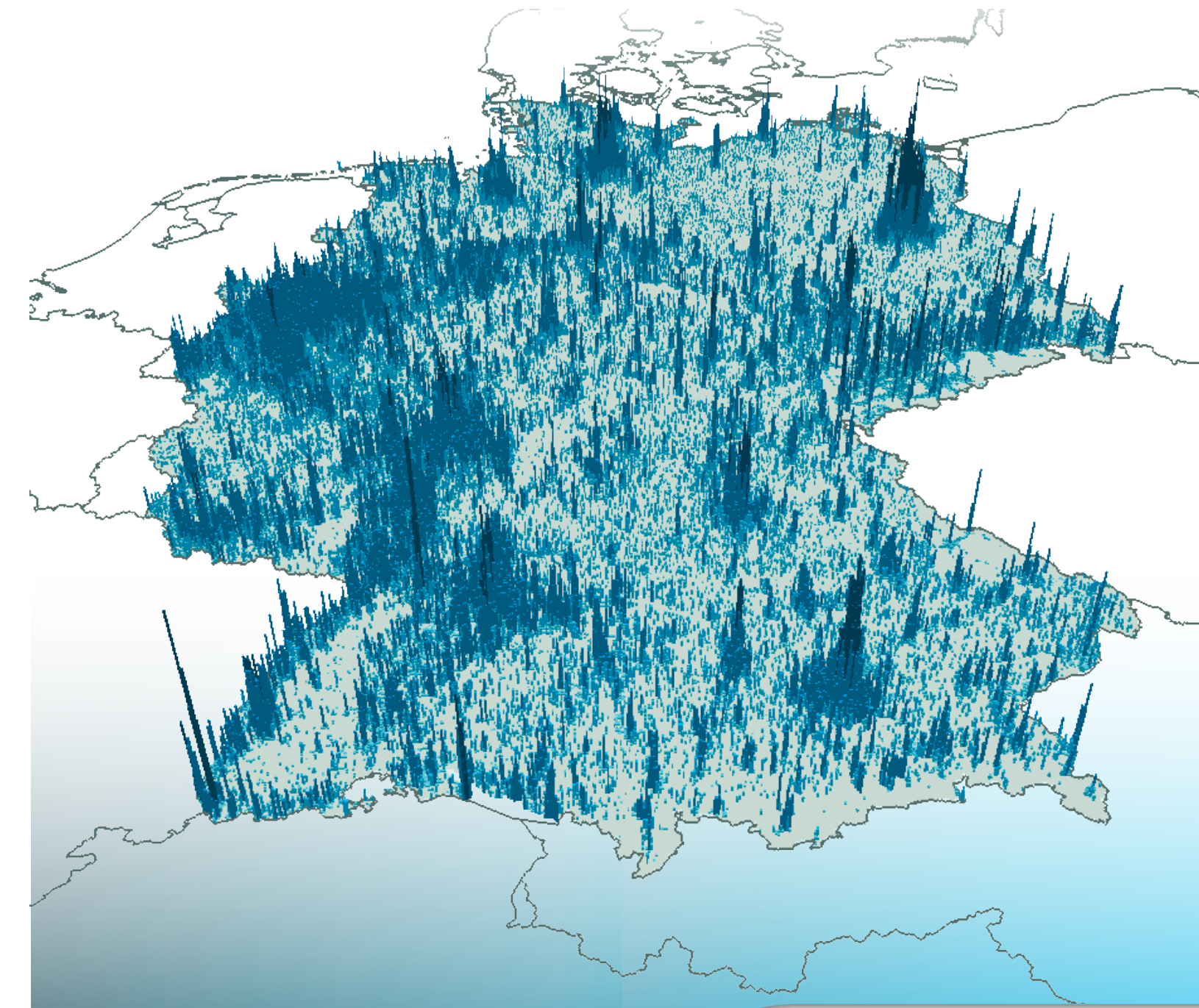
GeoVille GmbH

Sparkassenplatz 2, 3rd floor
 A - 6020 Innsbruck
 Austria
 Tel: +43 (0)512 56 20 21-0
 Fax: +43 (0)512 56 20 21-22
 Email: info@geoville.com
 Internet: www.geoville.com

All products in this brochure are produced by GeoVille.
 © GeoVille 2015

PopSpot

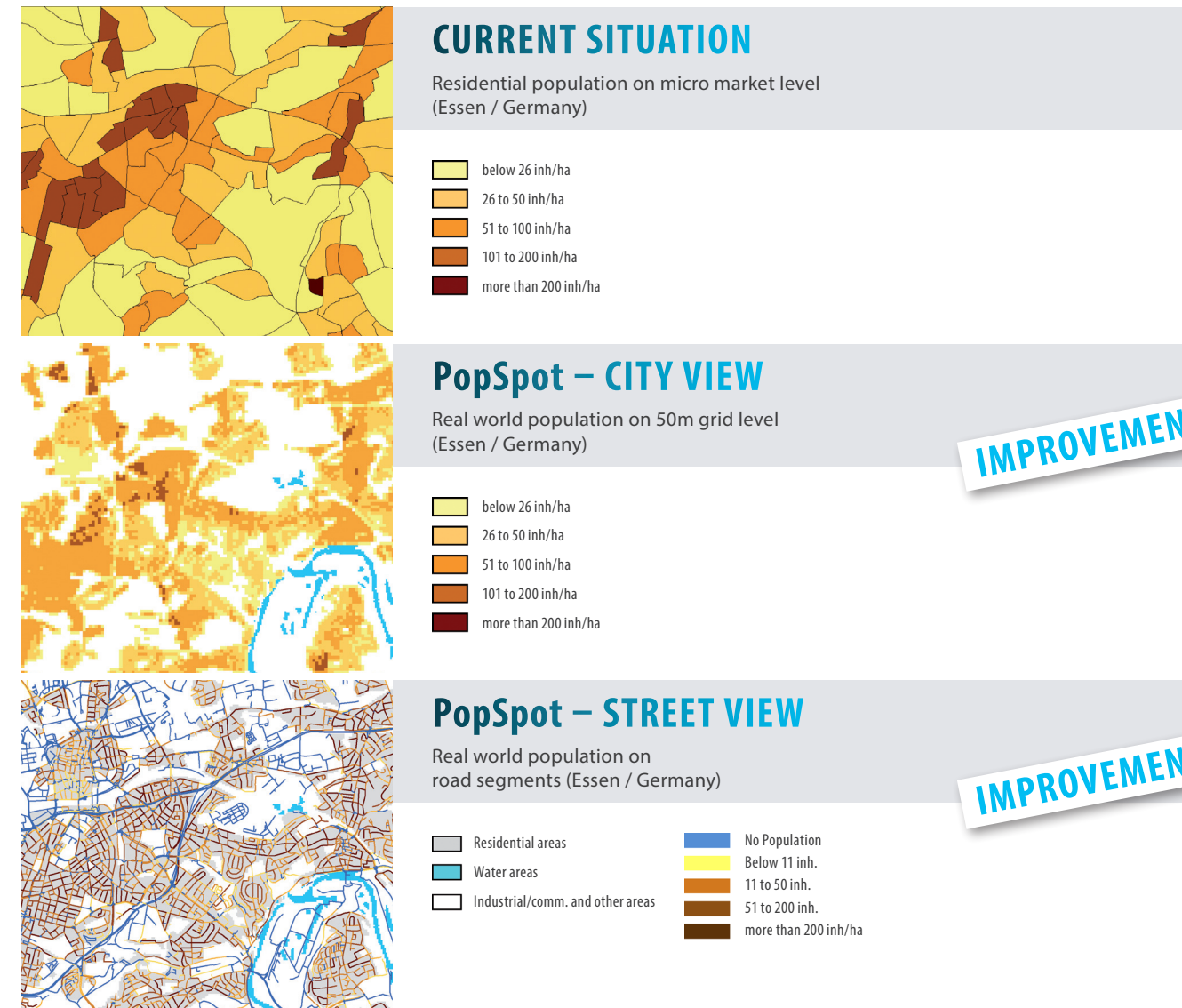
KNOWING WHERE YOUR CUSTOMERS ARE



NEXT GENERATION POPULATION DATA

“The PopSpot service trial gives us exactly the add on-information we need.”

German Telecom Provider



IMPROVEMENT

IMPROVEMENT

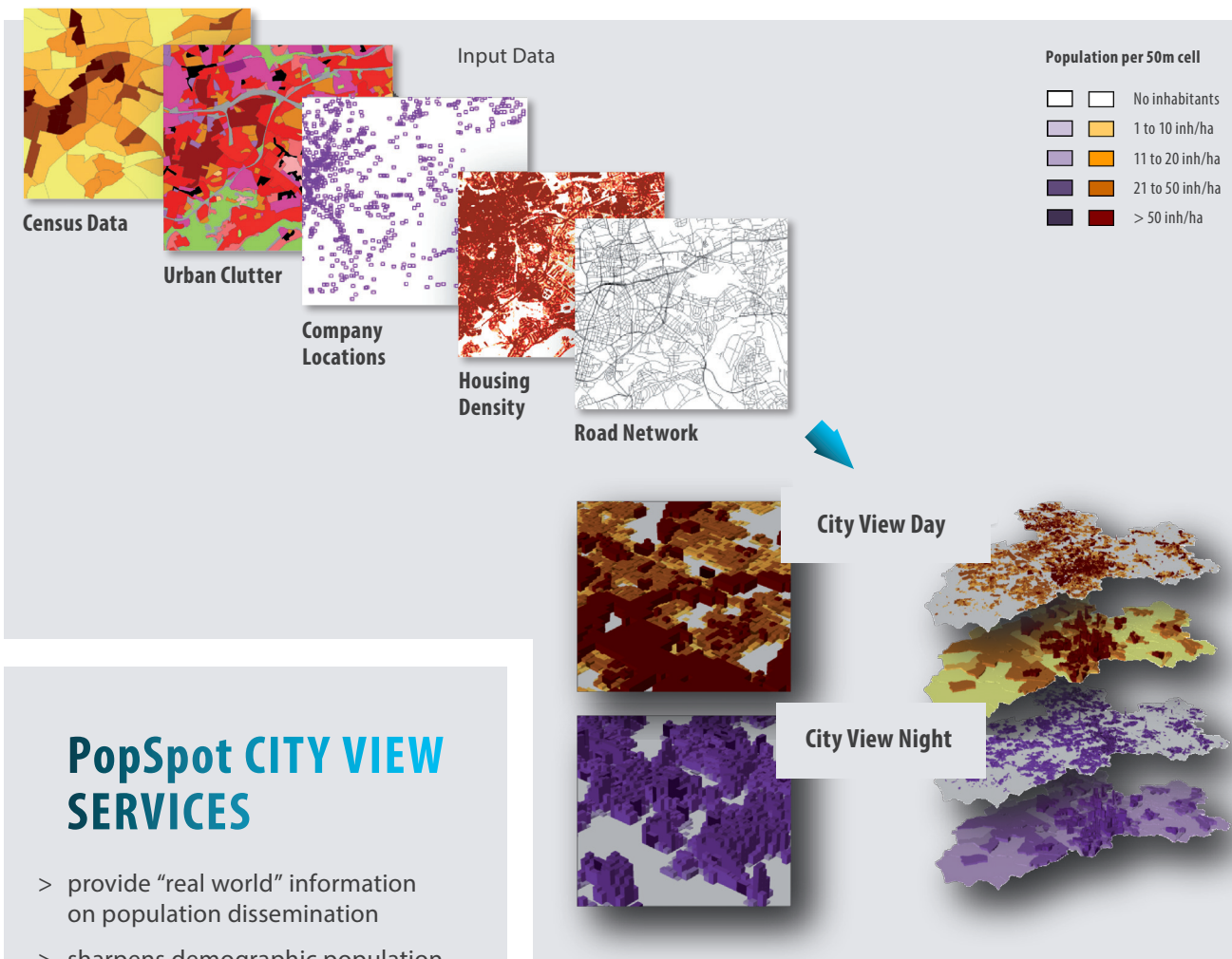
KNOWING WHERE YOUR CUSTOMERS ARE

Radio network planning	Accounting for population distribution
Geo-Marketing	Localising customer target groups
Market research	Improvement of direct mailing and advertising campaigns
Public Transport planning	Increasing the efficiency of public transport networks
Urban and Regional planning	Localising customer target groups
Business location analysis	Localising customer target groups

PopSpot SERVICES

... provide very detailed population information on cities, countries or entire regions. The products are delivered in GIS ready formats on grid cell and on street level.

PopSpot CITY VIEW High resolution population information based on 50m grid cells



PopSpot CITY VIEW SERVICES

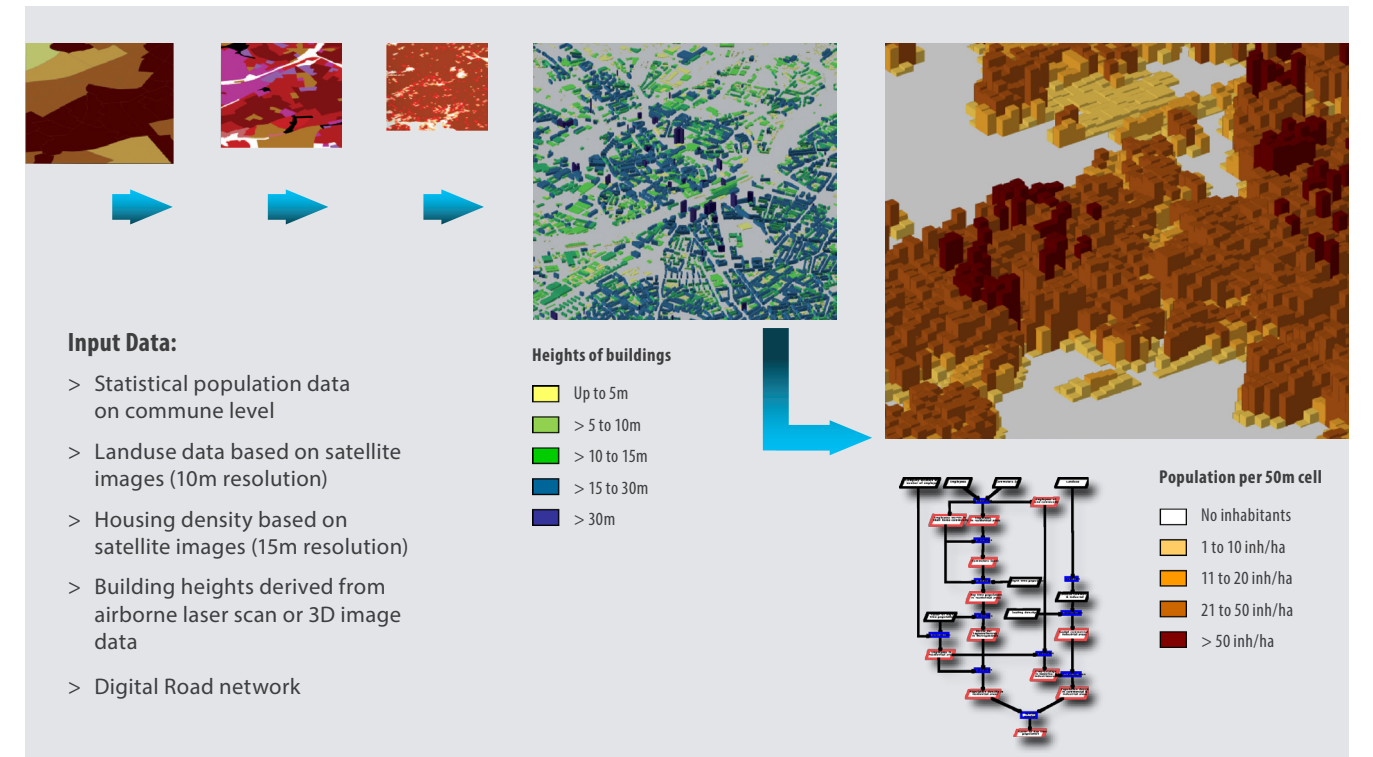
- > provide “real world” information on population dissemination
- > sharpens demographic population data by the factor 500
- > are provided as raster files with a resolution of 50m*50m
- > are based on statistical population information at Micro Market level, high level landuse information (clutter data), and sealing density derived from satellite images

Number of reference units (example from Essen/Germany)

Population Statistics	
Communes	5
Micro Markets	589
PopSpot Service City View	
50 m grid cells	280491 (factor of ~ 500)

PopSpot CITY VIEW 3D

... considers building heights for more precise estimation of population density



PopSpot STREET VIEW

... is a fully integrated add-on for digital street network data ... is based on the same data basis as the City-, Country- and RegionView services ... provides excellent information for Geo-Marketing

